

Cottonwood

Select & Better

View in the Cascade Grade Selector

Cottonwood Select & Better is ideal for clear cabinetry, furniture, and molding manufacture. It is also used for clear paint grade applications.

Cottonwood Select & Better includes all FAS2F and Select boards. Select boards must grade at least a #1 Shop on the back and the face must grade Select. This grade is not selected for sap and heartwood and can have a range of colors.

	6'1" (1.85m)	7'1" (2.16m)	8'1" (2.46m)	8'3" (2.52m)	10'1" (3.07m)	12'1" (3.68m)
4/4				●	●	

Width Specs

- 4" (102mm) admitting by volume
- 5% narrows minimum

Length Specs

- 6' (1.83m) minimum

Cutting Specs

- 4" x 3' (102mm x 914mm) and longer
- 3" x 6' (76mm x 1.83m) and longer clear face cuttings
- Reverse face grades #1 Shop

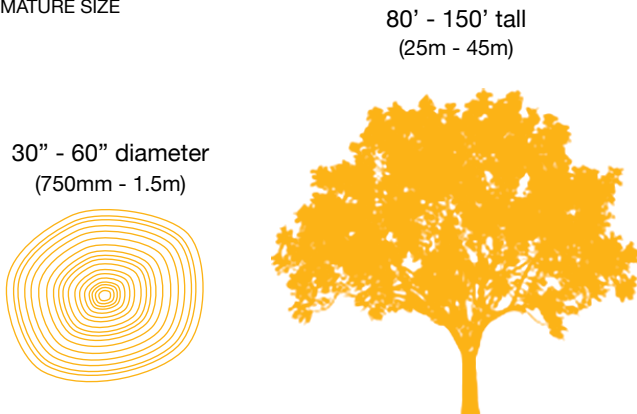
Notes

83.3% overall minimum yield.

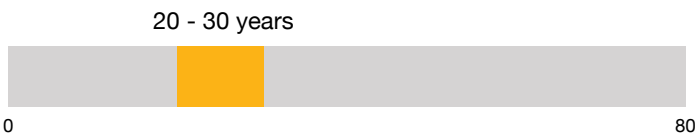
Species Info **Black Cottonwood** aka **Pacific Coast Poplar** (*Populus trichocarpa*)

Black Cottonwood, also known as Pacific Coast Poplar, is widely used in furniture, casegoods, moulding & millwork and upholstered furniture frame applications. It is generally used in applications needing North American hardwood at an aggressive price point.

TYPICAL MATURE SIZE



OPTIMAL HARVEST AGE



JANKA HARDNESS SCALE

Pacific Albus <i>Populus sp.</i>	287lb 1280N
Bigtooth Aspen <i>Populus grandidentata</i>	350lb 1550N
Black Cottonwood <i>Populus trichocarpa</i>	350lb 1550N
American Basswood <i>Tilia americana</i>	410lb 1820N
Yellow Poplar <i>Liriodendron tulipifera</i>	540lb 2400N

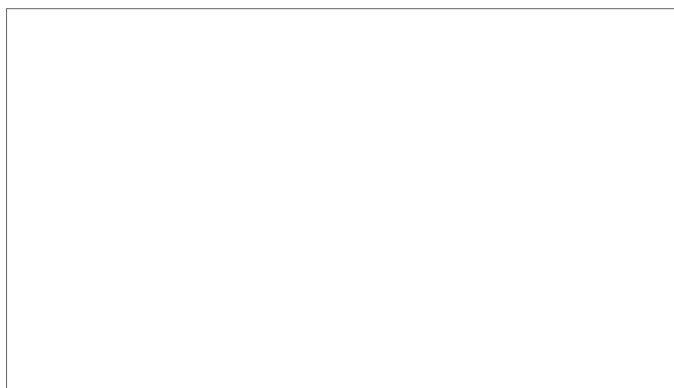
With Albus being a hybrid with similar properties to Black Cottonwood, the two species are easily substituted for one another. The closing of Albus production has led to significant interest in Black Cottonwood

Workability*

Easy to work with hand and machine tools, though sharp cutters are necessary when planing to avoid fuzzy surfaces, (subsequent fine-sanding may be necessary to obtain a smooth surface). Does not split easily. Glues and finishes well.

FINISHING	CHARACTER INTEREST	COLOR UNIFORMITY	MACHINING	SANDING/POLISHING	JOINT STRENGTH	GLUING	TOTAL
9	7	7	8	8	8	9	56 OUT OF 70

*U.S. Department of Agriculture



www.cascadehardwood.com

800-228-3065 | sales@cascadehardwood.com

Chehalis
158 Ribelin Road,
Chehalis, WA 98532 USA
Phone: +1.360.748.3317
Fax: +1.360.740.5117

Port Angeles
333 Eclipse Industrial Parkway
Port Angeles, WA 98363 USA
Phone: +1.360.452.6041
Fax: +1.360.417.6805

